

RÆBURN

COLLABORATION
FEATURING
TIMBERLAND

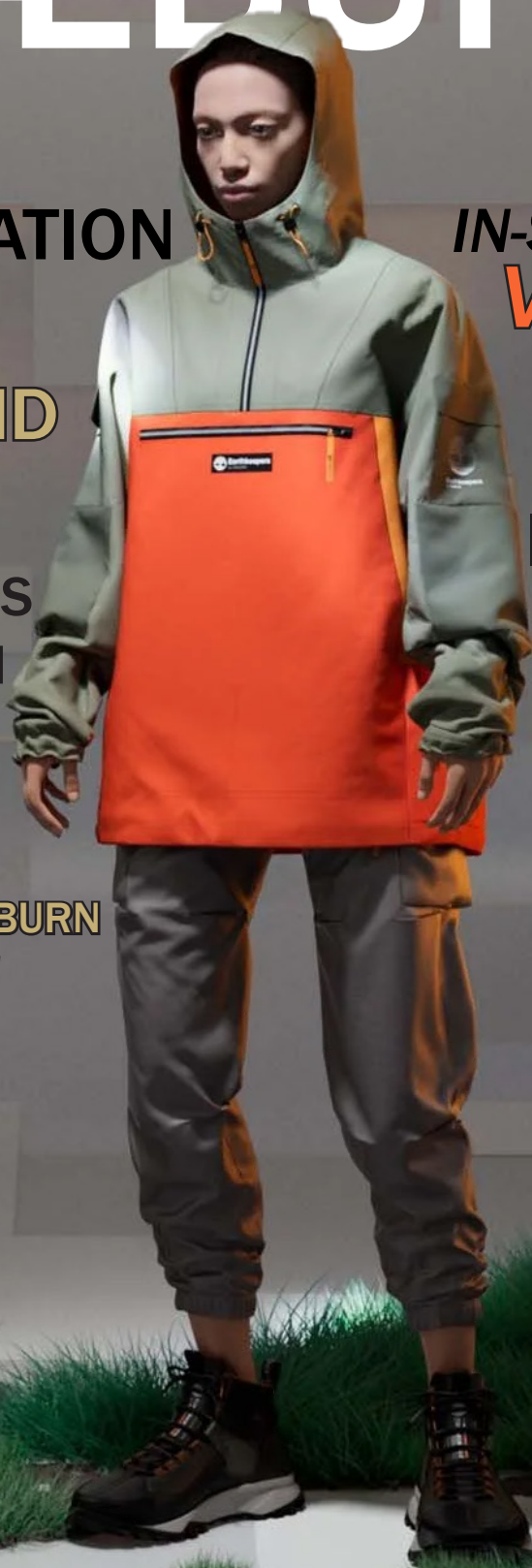
ALL NEW LOOKS
AT COLLECTION
EXCULSIVE

CHRISTOPHER RÆBURN
BIRTHDAY SPECIAL!

IN-STORE EVENT
V.I.P GUESTS

IN LONDON
SPECIAL
BEHIND THE
SCENES LOOK

10%
OFF WHEN



WHAT'S GOING

[illegible]

SHOES

TIMBERLOOP™ UTILITY MID BOOTS:

Designed for circularity with a combination of renewable, recycled, and regenerative materials. These super-comfortable, lightweight, durable boots are built to take you from the street to the trail and back again. Once you're done with them, you can engage with our partners at Timberland and make use of their sensational Timberloop programme; their expert technicians will take returned footwear apart, re-use or recycle the pieces, giving your well worn boots a new life, aiming to prevent products from having to see a landfill.

TIMBERLOOP™ MENS EDGE MID:

The Earthkeepers® by RÆBURN GreenStride Edge Mid Boot are Christopher's latest design using Timberland's GreenStride innovation. The soles are made from 75% renewable sugar cane and responsible natural rubber from trees to create a naturally comfortable foam. Tencel x Refriba make the upper part of the boot, a fabric made of 70% responsibly sourced wood pulp and 30% recycled cotton, helping to protect toes with the climbing rubber tip.

GREENSTRIDE™ EDGE:

The Earthkeepers® by RÆBURN GreenStride Edge Boots are Christopher's latest design using Timberland's GreenStride innovation. The soles are made from 75% renewable sugar cane and responsible natural rubber from trees to create a naturally comfortable foam. The boots are completely waterproof thanks to TimberDry linings made of 50% recycled plastic.

TIMBERLOOP EK MENS UTILITY BOOT:

The Earthkeepers® by RÆBURN Men's Utility Boot are Christopher's latest design using Timberland's TimberLoop innovation. The Timberloop EK+ Utility Boots have a removable ReBOTL sock bootie made from recycled plastic and a unique sole construction where with a cut of one seam, the natural rubber outsoles can be taken off and put into a recycling stream. Serving up lightweight comfort and eco-conscious style in one fit - so you can adventure on with zero limits.



**MEN'S EARTHKEEPERS® BY RÆBURN
TIMBERLOOP™ UTILITY MID BOOTS**

EK BY RÆBURN TBL MENS EDGE MID
\$205.00



EARTHKEEPERS® BY RÆBURN GS EDGE
\$235.00

TIMBERLOOP EK MENS UTILITY BOOT
\$235.00

TEES & CREWS



RELAXED LS TEE
\$120.00

RELAXED CREW SWEAT
\$205.00

RELAXED SS TEE
\$91.00

RELAXED TEE AND CREW SWEAT:

A new DNA to the collaboration, rooted in history and built for the bold. The EK+ by RÆBURN LS Tee and Crew Sweat is a unisex, relaxed fit style made from 100% regenerative cotton in a 190gm weight. Featuring a chest pocket with a contrasting zip opening. The Earthkeepers® embroidery is showcased on the front bottom.

- Cut & Sew Detailing
- Chest Pocket

SOFTSHELL HOODIE:

The EK+ by RÆBURN Softshell Hoodie is a unisex, relaxed fit style made from Organic Cotton in a 273gm weight. Featuring a back pocket with button closure.

- 98% Regenerative Cotton
- 2% Lycra® Elastane

JACKETS

SHERPA WOOL FLEECE:

The EK+ by RÆBURN Sherpa Wool Fleece is a unisex, relaxed fit style made from 71% Wool in a 400gm weight. Featuring reinforced elbow panels.

- Relaxed fit
- Cut & Sew Detailing
- Reinforced Elbow Panels
- Zip Fastening to Centre Front
- x2 Side Pockets w/ Zip fastening
- Storytelling Label
- Centre Back Length: 28.5"



SOFTSHELL HOODIE
\$320.00

SHERPA WOOL FLEECE
\$410.00

BAGS

RÆBURN Backpack: is highly functional and water-resistant, made of recycled Cordura® ECO fabric for extreme durability and performance. Featuring a padded air mesh back panel and ergonomic shoulder and sternum straps for increased breathability, comfort and stability



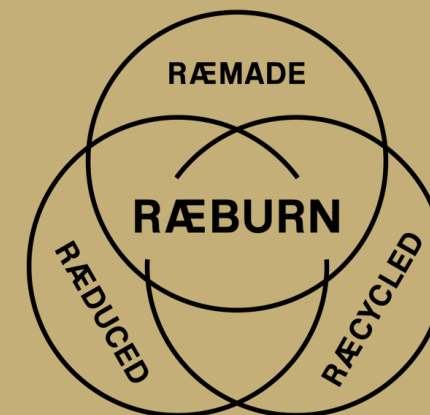
RÆBURN Sling: is highly functional and water-resistant, made of recycled Cordura® ECO fabric for extreme durability and performance. Featuring an adjustable shoulder strap with a side compression slider

BEHIND RÆBURN

Christopher Raeburn is the owner and founder of the clothing brand RÆBURN but has now also been elected as the global creative director of Timberland. Born August 13th this event was chosen to honor of the founder Christopher Raeburn.

"The RÆBURN RÆMADE philosophy has its origins in his fascination with military materials and utilitarian clothing.

Established in 2009, Christopher's never-ending 'archaeological' discoveries led to his first full collection (AW10 PREPARE) using de-commissioned military stock to create limited edition outerwear for both men and women. From wool field jackets to nylon parachute canopies, each RÆMADE style is produced by meticulously deconstructing the original and reworking the materials into unique and ethical garments."



EARTHKEEPERS



Our latest collaboration showcases Timberland's highest level of eco-innovation yet. Across footwear, apparel and accessories, the All Gender collection focuses on refined wardrobe essentials, travelling light and taking only what you need. Highlights include natural and recycled materials, Regenerative Leather and Recycled Down. Timberland aims for all its products to have a net positive impact on nature by 2030.

EXCLUSIVE DISCOUNTS

Students, Teachers, Military and Health Workers enjoy an exclusive **10% OFF** our RÆBURN collections



MILITARY



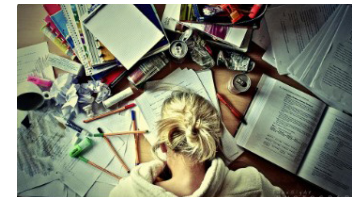
RESPONDER



MEDICAL



TEACHER



STUDENT



NON-PROFIT

JOIN OUR NEWS LETTER AND GET 15% OFF

HOW TO RECEIVE YOUR DISCOUNT ONLINE

1. Click Get Code above and sign into VerifyPass.
2. After verification, you'll receive a one-time discount code to apply during checkout.
3. For future purchases, return to this page and repeat Step 1. (Limit 1 code per 24 hours.)

RAEBURN



Alex Johnson
5394 Catalina Summit
Casper WY 27682



RAEBURN Magazine

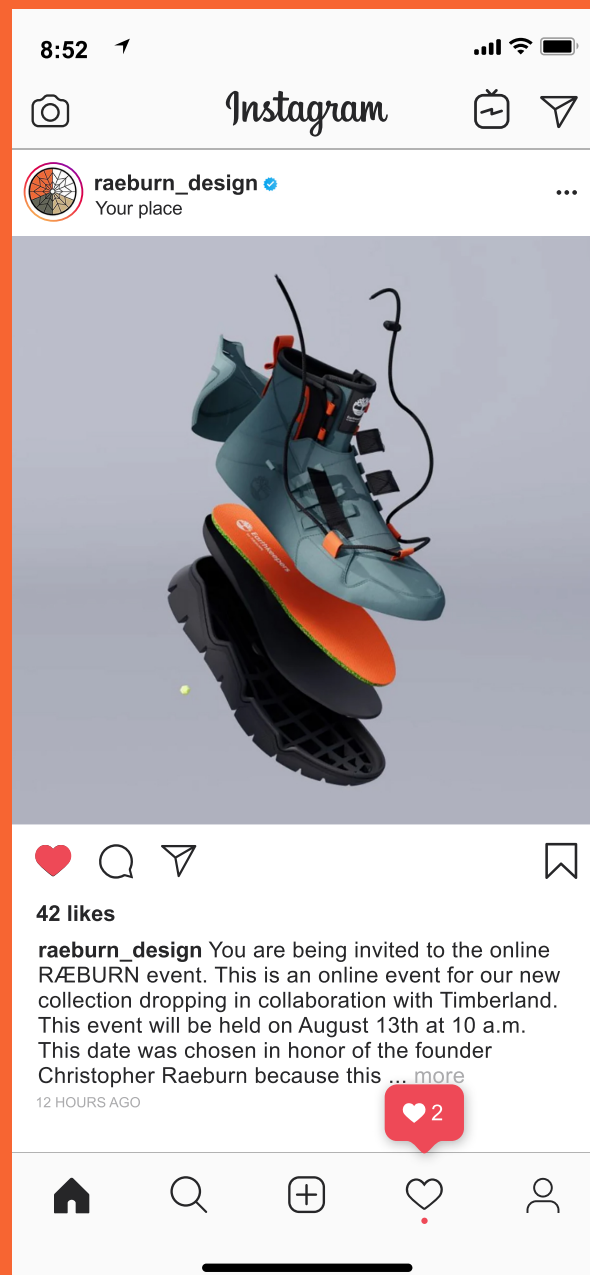
Scan here
to shop



Shop at raeburndesign.co.uk



RÆBURN



@RAEBURN-DESIGN



RÆBURN



EARTHKEEPERS® x RÆBURN

YOU ARE INVITED

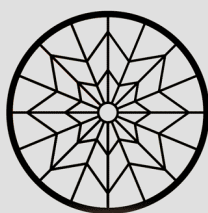
To the in-store RÆBURN event do to your large and consistent support of us. This is an in-store event for our new collection dropping in collaboration with Timberland. There will be a tour of our labs and available custom alterations for products bought that day. This event will be held on August 13th at 10 a.m. This date was chosen in honor of the founder Christopher Raeburn because this is his birthday.

RÆBURN - Carnaby, 2 Marshall St, Carnaby, London W1F 9BA, United Kingdom

To enter the building you will need to bring your postcard sent to you



SHOP NOW





RÆBURN





RÆBURN

YOU ARE INVITED

To the in-store RÆBURN event do to your large and consistent support of us. This is an in-store event for our new collection dropping in collaboration with Timberland. There will be a tour of our labs and available custom alterations for products bought that day.

This event will be held on **August 13th at 10 a.m.** This date was chosen in honor of the founder Christopher Raeburn because this is his birthday.

RÆBURN - Carnaby, 2 Marshall St,
Carnaby, London W1F 9BA, United
Kingdom



Alex Johnson
5394 Catalina Summit
27682
Wyoming, Casper
U.S.A

-This Will Be Used As Your Ticket In